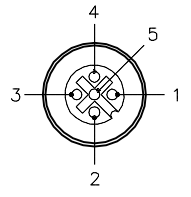
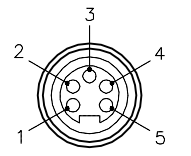


FEMALE END VIEW



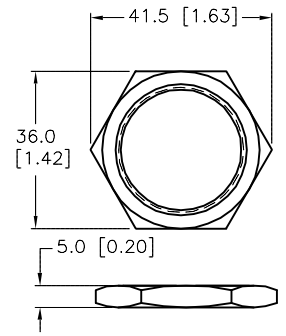
- 1 = BARE (SHIELD)
- 2 = RED (+ VOLTAGE)
- 3 = BLACK (- VOLTAGE)
- 4 = WHITE (CAN_H)
- 5 = BLUE (CAN_L)

FEMALE END VIEW



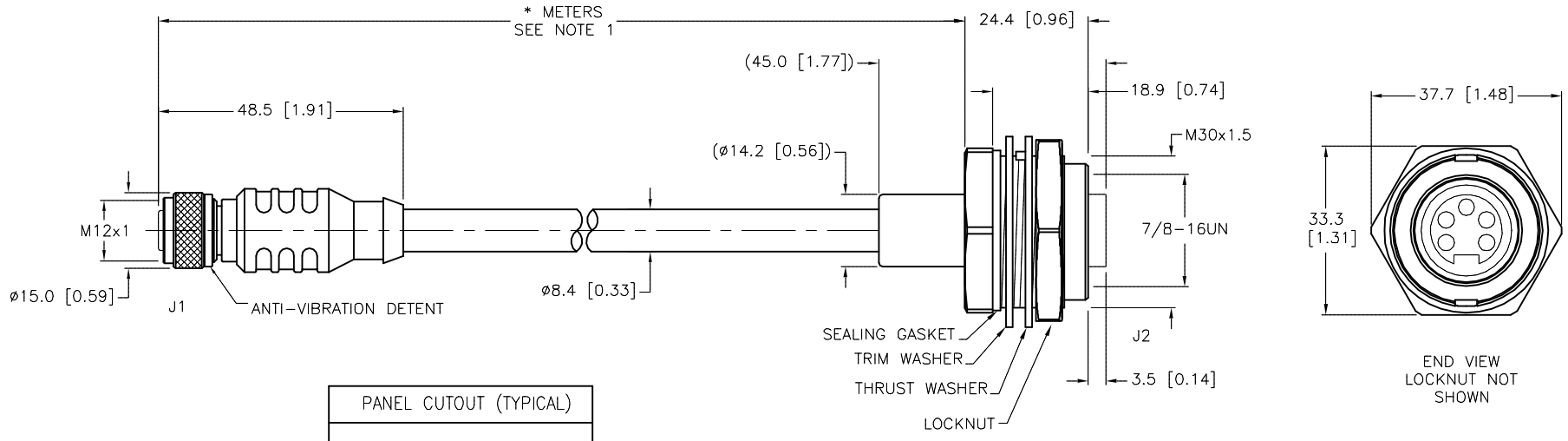
- 1 = BARE (SHIELD)
- 2 = RED (+ VOLTAGE)
- 3 = BLACK (- VOLTAGE)
- 4 = WHITE (CAN_H)
- 5 = BLUE (CAN_L)

M30x1.5 LOCKNUT



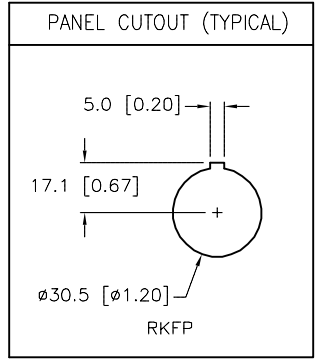
SPECIFICATIONS

| | |
|------------------------------------|------------------------------------|
| CONTACT CARRIER MATERIAL/COLOR | TPU/BLUE-GRAY |
| MOLDED MATERIAL/COLOR | TPU/BLUE-GRAY |
| CONTACT MATERIAL/PLATING | BRASS/GOLD |
| COUPLING NUT MATERIAL/PLATING (J1) | BRASS/NICKEL |
| HOUSING MATERIAL/PLATING (J2) | BRASS/NICKEL |
| RATED CURRENT [A] | 4.0 A |
| RATED VOLTAGE [V] | 250 VAC |
| OUTER JACKET MATERIAL/COLOR | PVC/GRAY |
| CONDUCTOR INSULATION MATERIAL | PE (DATA), PVC (POWER) |
| NUMBER OF CONDUCTORS [AWG] | 2x16 AWG, 2x20 AWG, 20 AWG DRAIN |
| SHIELDING | FOIL (PAIRS), ALUM. FOIL (OVERALL) |
| TEMPERATURE RATING | -40°C to +80°C (-40°F to +176°F) |
| PROTECTION CLASS | MEETS NEMA 1,3,4,6P AND IEC IP67 |
| ACCOMODATES WALL THICKNESS (J2) | .050" (1.3mm) to .250" (6.4mm) |



| CABLE LENGTH | TOLERANCE * |
|--------------|---|
| ALL LENGTHS | + 4% (OR 50mm) OF LENGTH - 0% (OR 0mm) OF LENGTH WHICHEVER IS GREATER |
| STRIP LENGTH | TOLERANCE * |
| 0-7mm | ±0.5mm |
| 8-29mm | ±1.0mm |
| 30-49mm | ±2.0mm |
| 50-69mm | ±3.0mm |
| 70-100mm | ±4.0mm |
| OVER 100mm | ±5.0mm |

* UNLESS OTHERWISE SPECIFIED



SOURCE DRAWING - FOR REFERENCE ONLY

NOTES:
1. "*" INDICATES CABLE LENGTH IN METERS. CONTACT TURCK TO ORDER SPECIFIC LENGTHS.

| | | | | | |
|---|---|--|---------------|---|--------------|
| RELATED DOCUMENTS 1. 2. 3. 4. | 3RD ANGLE PROJECTION | THIS DRAWING IS CONFIDENTIAL AND THE PROPERTY OF TURCK INC. USE OF THIS DOCUMENT WITHOUT WRITTEN PERMISSION IS PROHIBITED. | | 3000 CAMPUS DRIVE MINNEAPOLIS, MN 55441 1-800-544-7769 (763) 553-7300 (763) 553-0708 fax turck.com | |
| | MATERIAL | DRFT RDS | DATE 06/17/09 | DESCRIPTION RKC RKFP 5711-*M | |
| FINISH | ALL DIMENSIONS DISPLAYED ON THIS DRAWING ARE FOR REFERENCE ONLY | DSGN | SCALE 1=1.3 | IDENTIFICATION NO. | |
| | CONTACT TURCK FOR MORE INFORMATION | UNIT OF MEASUREMENT MILLIMETER [INCH] | | REV B | |
| | | DO NOT SCALE THIS DRAWING | | FILE: 777007536 | SHEET 1 OF 1 |

| | | | | |
|-----|--|-----|----------|---------|
| B | DRAWING PROCESSED AS PART OF ECO 33971 | CBM | 04/06/11 | 33971 |
| REV | DESCRIPTION | BY | DATE | ECO NO. |